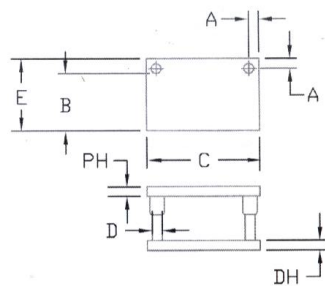


2 POST PLAIN BEARING ALL
STEEL DIE SET REAR POST
MODEL # 2PR

TO ORDER SPECIFY: QUANTITY,
MODEL, DIE SET NUMBER, AND
PIN LENGTH SEE EXAMPLES

EXAMPLE: (1) 2PR-1416-0708 X 9



FRONT TO BACK	LEFT TO RIGHT	THICKNESS OF		DIE SET NUMBER	PIN DIA.	TAB	TAB
B	C	PUNCH PH	DIE HOLDER DH		D	E	A
4	6	1 1/4	1 1/4	0406-0505	1	6 1/4	1 1/2
		1 1/4	1 1/2	0406-0506			
		1 1/2	1 1/2	0406-0506			
6	6	1 1/4	1 1/2	0606-0506	1	8 1/4	1 1/2
		1 1/2	1 1/2	0606-0606			
4	8	1 1/4	1 1/2	0408-0505	1	6 1/4	1 1/2
		1 1/4	1 1/2	0408-0606			
6	8	1 1/4	1 1/2	0608-0505	1	8 1/4	1 1/2
		1 1/4	1 1/2	0608-0506			
		1 1/2	1 1/2	0608-0607			
8	8	1 3/4	1 3/4	0608-0707	1	10 1/4	1 1/2
		1 1/4	1 1/2	0808-0507			
		1 1/2	1 1/2	0808-0606			
6	10	1 1/2	1 1/2	0610-0507	1	8 1/4	1 1/2
		1 1/4	1 1/2	0610-0506			
		1 1/2	1 1/2	0610-0607			
8	10	1 1/4	1 1/2	0810-0506	1 1/4	10 3/4	1 5/8
		1 1/2	1 1/2	0810-0606			
		1 1/4	1 1/2	1010-0506			
10	10	1 1/4	1 3/4	1010-0507	1 1/4	12 3/4	1 5/8
		1 1/2	1 1/2	1010-0606			
		1 1/2	1 1/2	1010-0607			
6	12	1 1/4	1 3/4	0612-0507	1 1/4	8 3/4	1 5/8
		1 1/2	1 1/2	0612-0606			
		1 1/2	1 3/4	0612-0607			
		2	2	0612-0808			
8	12	1 1/4	1 1/2	0812-0506	1 1/4	10 3/4	1 5/8
		1 1/4	1 3/4	0812-0507			
		1 1/2	1 1/2	0812-0606			
		1 1/2	1 3/4	0812-0607			
		2	2	0812-0808			
10	12	1 1/4	1 1/2	1012-0506	1 1/4	12 3/4	1 5/8
		1 1/4	1 3/4	1012-0507			
		1 1/2	1 1/2	1012-0606			
		1 1/2	1 3/4	1012-0607			
		2	2	1012-0808			
12	12	1 1/4	1 1/2	1212-0506	1 1/4	14 3/4	1 5/8
		1 1/2	1 1/2	1212-0606			
		1 1/2	1 3/4	1212-0607			
		2	2	1212-0808			
6	14	1 1/4	1 1/2	0614-0506	1 1/4	8 3/4	1 5/8
		1 1/2	1 1/2	0614-0606			
		1 1/2	1 3/4	0614-0607			
		2	2	0614-0808			

PHONE 1-888-535-5434 TOLL FREE!

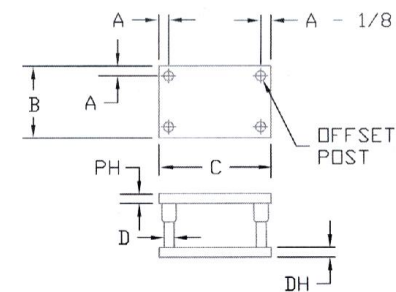
OTHER SIZES AND PLATE THICKNESS AVAILABLE FROM STOCK. TO ORDER SPECIFY: QUANTITY, MODEL, "B" DIM, "C" DIM, "PH" DIM, "DH" DIM, "D" DIM, AND LENGTH OF PIN.

EXAMPLE: (1) 2PR 1824 2 2 1/2 2 DIA X 10 LG.

4 POST PLAIN BEARING ALL
STEEL DIE SET REAR POST
MODEL # 4P

TO ORDER SPECIFY: QUANTITY,
MODEL, DIE SET NUMBER, AND
PIN LENGTH SEE EXAMPLES

EXAMPLE: (1) 4P-1416-0708 X 9

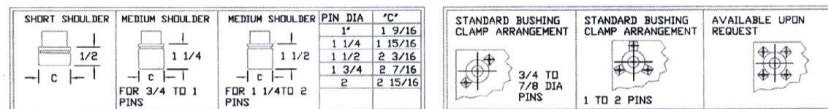


FRONT TO BACK	LEFT TO RIGHT	THICKNESS OF		DIE SET NUMBER	PIN DIA.	TAB
B	C	PUNCH PH	DIE HOLDER DH		D	A
8	8	1	1 1/4	0808-0405	1	1 1/4
		1 1/4	1 1/4	0808-0505		
		1 1/2	1 1/2	0808-0606		
8	10	1	1 1/4	0810-0405	1	1 1/4
		1 1/4	1 1/4	0810-0505		
		1 1/2	1 1/2	0810-0606		
10	10	1	1 1/4	1010-0405	1	1 1/4
		1 1/4	1 1/4	1010-0505		
		1 1/2	1 1/2	1010-0606		
8	12	1	1 1/4	0812-0405	1	1 1/4
		1 1/4	1 1/4	0812-0505		
		1 1/2	1 1/2	0812-0606		
10	12	1 1/2	1 1/2	1012-0506	1 1/4	1 5/8
		1 1/2	1 1/2	1012-0606		
		1 1/4	1 1/2	1012-0607		
12	12	1 1/2	1 1/2	1212-0506	1 1/4	1 5/8
		1 1/2	1 1/2	1212-0606		
		1 1/2	1 3/4	1212-0607		
10	14	1 3/4	1 3/4	1014-0607	1 1/4	1 5/8
		1 1/4	1 3/4	1014-0707		
		1 1/2	1 1/2	1214-0506		
		1 1/2	1 1/2	1014-0506		
12	14	1 1/2	1 1/2	1214-0506	1 1/4	1 5/8
		1 1/2	1 1/2	1214-0606		
		1 1/2	1 3/4	1214-0607		
14	14	1 1/2	1 1/2	1414-0506	1 1/4	1 5/8
		1 1/2	1 1/2	1414-0606		
		1 1/2	1 3/4	1414-0607		
12	16	1 1/2	1 1/2	1216-0506	1 1/4	1 5/8
		1 1/2	1 1/2	1216-0606		
		1 1/2	1 3/4	1216-0607		
14	16	1 1/2	1 1/2	1416-0506	1 1/4	1 5/8
		1 1/2	1 1/2	1416-0606		
		1 1/2	1 3/4	1416-0607		
14	16	1 1/2	1 1/2	1416-0506	1 1/2	1 3/4
		1 1/2	1 1/2	1416-0606		
		1 1/2	1 3/4	1416-0607		
		2	2	1416-0808		

FRONT TO BACK	LEFT TO RIGHT	THICKNESS OF		DIE SET NUMBER	PIN DIA.	TAB
B	C	PUNCH PH	DIE HOLDER DH		D	A
16	16	1 1/2	1 1/2	1616-0606	1 1/2	1 3/4
		1 1/2	1 3/4	1616-0607		
		1 3/4	1 3/4	1616-0707		
		2	2	1616-0808		
14	18	1 1/2	1 3/4	1418-0607	1 1/2	1 3/4
		1 3/4	1 3/4	1418-0707		
		2	2	1418-0808		
16	18	1 1/2	1 3/4	1618-0607	1 1/2	1 3/4
		1 3/4	1 3/4	1618-0707		
		2	2	1618-0808		
16	20	1 1/2	1 3/4	1620-0607	1 1/2	1 3/4
		1 3/4	1 3/4	1620-0707		
		2	2	1620-0808		
18	20	1 1/2	1 3/4	1820-0607	1 1/2	1 3/4
		1 3/4	1 3/4	1820-0707		
		2	2	1820-0808		
16	24	1 1/2	1 3/4	1624-0607	1 1/2	1 3/4
		1 3/4	1 3/4	1624-0707		
		2	2	1624-0808		
18	24	1 1/2	1 3/4	1824-0607	1 1/2	1 3/4
		1 3/4	1 3/4	1824-0707		
		2	2	1824-0808		
20	24	1 1/2	1 3/4	2024-0607	1 1/2	1 3/4
		1 3/4	1 3/4	2024-0707		
		2	2	2024-0808		
24	24	1 1/2	1 3/4	2424-0607	1 1/2	1 3/4
		1 3/4	1 3/4	2424-0707		
		2	2	2424-0808		

OTHER SIZES AND PLATE THICKNESS AVAILABLE FROM STOCK. TO ORDER SPECIFY: QUANTITY, MODEL, "B" DIM, "C" DIM, "PH" DIM, "DH" DIM, "D" DIM, AND LENGTH OF PIN. EXAMPLE: (2) 4P 3636 2 2 1/2 2 DIA X 10 LONG

DEMOUNTABLE BUSHINGS ARE AVAILABLE IN 3 STYLES, SHORT, MEDIUM, AND LONG SHOULDER. MEDIUM SHOULDER WILL BE SHIPPED UNLESS OTHERWISE SPECIFIED.



PHONE 1-888-535-5434 TOLL FREE!