

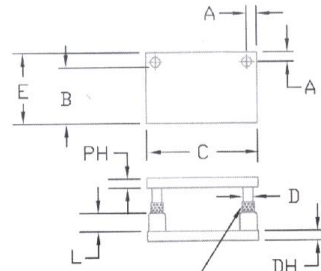
2 POST BALL BEARING ALL STEEL DIE SET REAR POST MODEL # 2PR

TO ORDER SPECIFY: QUANTITY, MODEL, DIE SET NUMBER, AND PIN LENGTH, BUSHING LENGTH, AND BEARING LENGTH, ADD BB TO END OF PART #. SEE EXAMPLES

EXAMPLE: (1)
2PR-1416-0708 X 9 LG X 5 LG X 3
3/4 LG X BB

FRONT TO BACK	LEFT TO RIGHT	THICKNESS OF PUNCH HOLDER	DIE HOLDER	DIE SET NUMBER	PIN DIA.	TAB	TAB	TAB	TAB
B	C	PH	DH		D	E	A	L	L1
4	6	1 1/4	1 1/4	0406-0505	1	6 1/4	1 1/2	2	1 1/2
		1 1/4	1 1/4	0406-0506				3	2
		1 1/2	1 1/2	0406-0606				3 3/4	2 1/2
		1 1/4	1 1/4	0606-0503				2	1 1/2
6	6	1 1/4	1 1/2	0606-0506	1	8 1/4	1 1/2	2	1 1/2
		1 1/2	1 1/2	0606-0606				3 3/4	2 1/2
		1 1/4	1 1/4	0408-0505				2	1 1/2
4	8	1 1/4	1 1/2	0408-0506	1	6 1/4	1 1/2	3	2
		1 1/2	1 1/2	0408-0606				3 3/4	2 1/2
6	8	1 1/4	1 1/4	0608-0505	1	8 1/4	1 1/2	2	1 1/2
		1 1/2	1 1/2	0608-0606				3	2
		1 1/2	1 1/2	0608-0607				3 3/4	2 1/2
		1 3/4	1 3/4	0608-0707				2	1 1/2
8	8	1 1/4	1 1/2	0808-0505	1	10 1/4	1 1/2	2	1 1/2
		1 1/2	1 1/2	0808-0606				3 3/4	2 1/2
		1 1/2	1 1/2	0808-0607				2	1 1/2
		1 1/4	1 3/4	0808-0507				3	2
6	10	1 1/2	1 1/2	0610-0505	1	8 1/4	1 1/2	2	1 1/2
		1 1/2	1 1/2	0610-0606				3 3/4	2 1/2
		1 1/4	1 3/4	0810-0507				3	2
8	10	1 1/4	1 1/2	0810-0506	1 1/4	10 3/4	1 5/8	2	1 1/2
		1 1/2	1 1/2	0810-0606				5	3
		1 1/2	1 1/2	0810-0607				6	3 1/4
		1 1/4	1 3/4	0810-0507				3	2
10	10	1 1/2	1 1/2	1010-0505	1 1/4	12 3/4	1 5/8	2	1 1/2
		1 1/2	1 1/2	1010-0606				4	2 1/2
		1 1/4	1 3/4	1010-0507				6	3 1/4
6	12	1 1/4	1 1/2	0612-0506	1 1/4	8 3/4	1 5/8	2	1 1/2
		1 1/4	1 3/4	0612-0606				3	2
		1 1/2	1 1/2	0612-0607				5	3
		1 1/2	1 1/2	0612-0608				6	3 1/4
		2	2	0612-0808				3	2
8	12	1 1/4	1 1/2	0812-0506	1 1/4	10 3/4	1 5/8	2	1 1/2
		1 1/4	1 3/4	0812-0507				4	2 1/2
		1 1/2	1 1/2	0812-0606				5	3
		1 1/2	1 1/2	0812-0607				6	3 1/4
		2	2	0812-0808				3	2
10	12	1 1/4	1 1/2	1012-0506	1 1/4	12 3/4	1 5/8	2	1 1/2
		1 1/4	1 3/4	1012-0507				4	2 1/2
		1 1/2	1 1/2	1012-0606				5	3
		1 1/2	1 1/2	1012-0607				6	3 1/4
		2	2	1012-0808				3	2
12	12	1 1/4	1 1/2	1212-0506	1 1/4	14 3/4	1 5/8	2	1 1/2
		1 1/4	1 3/4	1212-0507				4	2 1/2
		1 1/2	1 1/2	1212-0606				5	3
		1 1/2	1 1/2	1212-0607				6	3 1/4
		2	2	1212-0808				3	2
6	14	1 1/4	1 1/2	0614-0506	1 1/4	8 3/4	1 5/8	2	1 1/2
		1 1/4	1 3/4	0614-0507				4	2 1/2
		1 1/2	1 1/2	0614-0606				5	3
		1 1/2	1 1/2	0614-0607				6	3 1/4
		2	2	0614-0808				3	2

PHONE 1-888-535-5434 TOLL FREE!



BEARING LENGTH L1

FRONT TO BACK	LEFT TO RIGHT	THICKNESS OF PUNCH HOLDER	DIE HOLDER	DIE SET NUMBER	PIN DIA.	TAB	TAB	TAB	TAB
B	C	PH	DH		D	E	A	L	L1
8	14	1 1/4	1 1/2	0814-0506	1 1/4	10 3/4	1 5/8	3	2
		1 1/4	1 3/4	0814-0507				4	2 1/2
		1 1/2	1 1/2	0814-0606				5	3
		1 1/2	1 1/2	0814-0607				6	3 1/4
		2	2	0814-0808				3	2
10	14	1 1/4	1 1/2	1014-0506	1 1/4	12 3/4	1 5/8	3	2
		1 1/2	1 1/2	1014-0606				4	2 1/2
		1 1/2	1 1/2	1014-0607				5	3
		2	2	1014-0808				6	3 1/4
12	14	1 1/4	1 1/2	1214-0506	1 1/2	14 3/4	1 3/4	3	2 1/2
		1 1/2	1 1/2	1214-0606				4	3
		1 1/2	1 1/2	1214-0607				5	3 1/2
		2	2	1214-0808				6	3 3/4
8	16	1 1/4	1 1/2	0816-0506	1 1/4	10 3/4	1 5/8	3	2
		1 1/4	1 3/4	0816-0507				4	2 1/2
		1 1/2	1 1/2	0816-0606				5	3
		1 1/2	1 1/2	0816-0607				6	3 1/4
		2	2	0816-0808				3	2
12	16	1 1/4	1 1/2	1216-0506	1 1/2	15	1 3/4	3	2 1/2
		1 1/2	1 1/2	1216-0606				4	3
		1 1/2	1 1/2	1216-0607				5	3 1/2
		2	2	1216-0808				6	3 3/4
15	16	1 1/2	1 1/2	1516-0506	1 1/2	19	1 3/4	3	2 1/2
		1 1/2	1 1/2	1516-0606				4	3
		1 1/2	1 1/2	1516-0607				5	3 1/2
		2	2	1516-0808				6	3 3/4
8	18	1 1/4	1 1/2	0818-0506	1 1/4	10 3/4	1 5/8	3	2
		1 1/2	1 1/2	0818-0606				4	2 1/2
		1 1/2	1 1/2	0818-0607				5	3
		2	2	0818-0808				6	3 1/4
12	18	1 1/4	1 1/2	1218-0506	1 1/2	15	1 3/4	3	2 1/2
		1 1/2	1 1/2	1218-0606				4	3
		1 1/2	1 1/2	1218-0607				5	3 1/2
		2	2	1218-0808				6	3 3/4
14	18	1 1/4	1 1/2	1418-0506	1 1/2	17	1 3/4	3	2 1/2
		1 1/2	1 1/2	1418-0606				4	3
		1 1/2	1 1/2	1418-0607				5	3 1/2
		2	2	1418-0808				6	3 3/4
18	18	1 1/4	1 1/2	1818-0506	1 1/2	21	1 3/4	3	2 1/2
		1 1/2	1 1/2	1818-0606				4	3
		1 1/2	1 1/2	1818-0607				5	3 1/2
		2	2	1818-0808				6	3 3/4

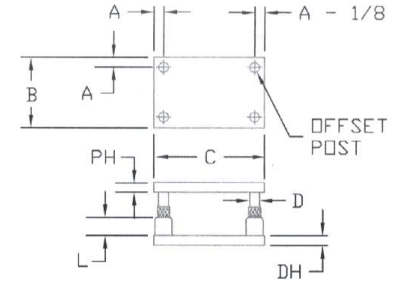
OTHER SIZES AND PLATE THICKNESS AVAILABLE FROM STOCK. TO ORDER SPECIFY: QUANTITY, MODEL, "B" DIM, "C" DIM, "PH" DIM, "DH" DIM, "D" DIM, LENGTH OF PIN, LENGTH OF BUSHING, LENGTH OF BEARING, AND ADD BB TO END OF PART NUMBER. EXAMPLE:

(1) 2PR-1824 X 2 X 2 X 2 DIA X 10 LG X 6 LG X 4 1/2 LG - BB

4 POST BALL BEARING ALL STEEL DIE SET REAR POST MODEL # 4P

TO ORDER SPECIFY: QUANTITY, MODEL, DIE SET NUMBER, AND PIN LENGTH, BUSHING LENGTH, AND BEARING LENGTH, ADD BB TO END OF PART # SEE EXAMPLES

EXAMPLE: (1) 4P-1416-0708 X 9 LG X 5 LG X 3 3/4 LG BB



FRONT TO BACK	LEFT TO RIGHT	THICKNESS OF PUNCH HOLDER	DIE HOLDER	DIE SET NUMBER	PIN DIA.	TAB	TAB	TAB	TAB
B	C	PH	DH		D	A	L	L1	
8	8	1	1 1/4	0808-0405	1	1 1/4	2	1 1/2	
		1 1/4	1 1/4	0808-0505			3	2	
		1 1/2	1 1/2	0808-0606			3 3/4	2 1/2	
8	10	1	1 1/4	0810-0405	1	1 1/4	2	1 1/2	
		1 1/4	1 1/4	0810-0505			3	2	
		1 1/2	1 1/2	0810-0606			3 3/4	2 1/2	
10	10	1	1 1/4	1010-0405	1	1 1/4	2	1 1/2	
		1 1/4	1 1/4	1010-0505			3	2	
		1 1/2	1 1/2	1010-0606			3 3/4	2 1/2	
8	12	1	1 1/4	0812-0405	1	1 1/4	2	1 1/2	
		1 1/4	1 1/4	0812-0505			3	2	
		1 1/2	1 1/2	0812-0606			3 3/4	2 1/2	
10	12	1 1/4	1 1/4	1012-0505	1 1/4	1 5/8	4	2 1/2	
		1 1/2	1 1/2	1012-0606			5	3	
		1 1/2	1 1/2	1012-0607			6	3 1/4	
		1 1/4	1 1/4	1012-0503			3	2	
12	12	1 1/4	1 1/2	1212-0505	1 1/4	1 5/8	4	2 1/2	
		1 1/2	1 1/2	1212-0606			5	3	
		1 1/2	1 1/2	1212-0607			6	3 1/4	
		1 1/4	1 1/2	1212-0506			3	2	
10	14	1 1/2	1 1/2	1014-0506	1 1/4	1 5/8	4	2 1/2	
		1 1/2	1 1/2	1014-0606			5	3	
		1 1/2	1 1/2	1014-0607			6	3 1/4	
		1 3/4	1 3/4	1014-0707			3	2	
12	14	1 1/2	1 1/2	1214-0506	1 1/4	1 5/8	4	2 1/2	
		1 1/2	1 1/2	1214-0606			5	3	
		1 1/2	1 1/2	1214-0607			6	3 1/4	
		1 1/4	1 3/4	1214-0507			4	2 1/2	
14	14	1 3/4	1 3/4	1414-0707	1 1/4	1 5/8	5	3	
		1 3/4	1 3/4	1414-0708			6	3 1/4	
		1 1/2	1 1/2	1414-0606			3	2	
		1 1/2	1 1/2	1414-0607			4	2 1/2	
12	16	1 1/4	1 1/2	1216-0506	1 1/4	1 5/8	4	2 1/2	
		1 1/2	1 1/2	1216-0606			5	3	
		1 1/2	1 1/2	1216-0607			6	3 1/4	
		1 3/4	1 3/4	1414-0707			3	2	
14	16	1 1/4	1 1/2	1416-0506	1 1/2	1 3/4	4	2 1/2	
		1 1/2	1 1/2	1416-0606			5	3	
		1 1/2	1 1/2	1416-0607			6	3 1/4	
		1 3/4	1 3/4	1416-0707			3	2	
		1 3/4	1 3/4	1416-0708			4	2 1/2	

FRONT TO BACK	LEFT TO RIGHT	THICKNESS OF PUNCH HOLDER	DIE HOLDER	DIE SET NUMBER	PIN DIA.	TAB	TAB	TAB	TAB
B	C	PH	DH		D	A	L	L1	
16	16	1 1/2	1 1/2	1616-0606	1 1/2	1 3/4	3	2 1/2	
		1 1/2	1 1/2	1616-0607			4	3	