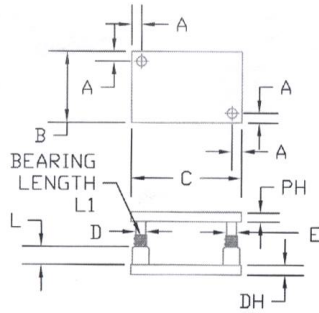


2 POST BALL BEARING ALL STEEL DIE SET  
DIAGONAL POST MODEL # 2PD



EXAMPLE: (1) 2PD-1416-0708 X 9  
LG X 5 LG X 3 3/4 LG X BB

FRONT TO BACK	LEFT TO RIGHT	THICKNESS OF PUNCH HOLDER PH	DIE SET NUMBER	PIN DIA. D	PIN DIA. E	TAB A	TAB L	TAB L1
8	10	1 1/4	1 1/2	0810-0566			2	2
		1 1/2	1 1/2	0810-0666	1/4	1	5/8	2 1/2
		1 1/2	1 3/4	0810-0667			3	2 1/2
		1 3/4	1 3/4	0810-0707			3 3/4	2 1/2
		1 1/4	1 1/2	1012-0566			3	2 1/2
		1 1/2	1 1/2	1012-0666	1/2	1 1/4	1 3/4	4
		1 1/2	1 3/4	1012-0667			5	3
		1 3/4	1 3/4	1012-0707			6	3 1/4
		1 1/4	1 1/2	1212-0566			3	2 1/2
		1 1/2	1 1/2	1212-0666	1/2	1 1/4	1 3/4	4
		1 1/2	1 3/4	1212-0667			5	3
		1 3/4	1 3/4	1212-0707			6	3 1/4
		1 1/4	1 1/2	1014-0566			3	2 1/2
		1 1/2	1 1/2	1014-0666	1/2	1 1/4	1 3/4	4
		1 1/2	1 3/4	1014-0667			5	3
		1 3/4	1 3/4	1014-0707			6	3 1/4
		1 1/4	1 1/2	1214-0566			3	2 1/2
		1 1/2	1 1/2	1214-0666	1/2	1 1/4	1 3/4	4
		1 1/2	1 3/4	1214-0667			5	3
		1 3/4	1 3/4	1214-0707			6	3 1/4
		1 1/2	1 1/2	1414-0566			4	3 1/4
		1 3/4	1 3/4	1414-0667	3/4	1 1/2	1 7/8	5
		1 3/4	1 3/4	1414-0708			6	3 3/4
		1 1/2	1 1/2	1216-0566			3	3
		1 1/2	1 3/4	1216-0667	1 3/4	1 1/2	1 7/8	4
		1 3/4	1 3/4	1216-0707			5	3 1/2
		1 3/4	2	1216-0708			6	3 3/4
		1 1/2	1 3/4	1416-0667			4	3 1/2
		1 1/2	1 1/2	1416-0707	2	1 3/4	2	5
		1 1/2	1 3/4	1416-0708			6	4
		1 3/4	1 3/4	1416-0808			7	4 1/4

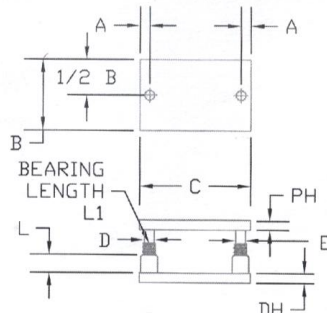
OTHER SIZES, THICKNESS, AND PIN DIAMETERS ARE AVAILABLE :

TO ORDER SPECIFY: QUANTITY, MODEL, FRONT TO BACK DIM, LEFT TO RIGHT DIM, PUNCH HOLDER THICKNESS, DIE HOLDER THICKNESS, LARGER PIN DIA, & PIN LENGTH, BUSHING LENGTH, BEARING LENGTH, AND ADD BB TO THE END OF THE PART #.

OTHER SERVICES INCLUDE: DIFFERENT PIN LOCATIONS, PLAIN BEARINGS, TORCH CUT SLUG HOLES, MILLED POCKETS, BOLT HOLES, FINISHED EDGES, DEMOUNTABLE BUSHINGS. AND YOU NAME IT.

PHONE 1-888-535-5434 TOLL FREE

2 POST BALL BEARING ALL STEEL DIE SET  
CENTER POST MODEL # 2PC



EXAMPLE: (1) 2PC-1416-0708 X 9  
LG X 5 LG X 3 3/4 LG X BB

FRONT TO BACK	LEFT TO RIGHT	THICKNESS OF PUNCH HOLDER PH	DIE SET NUMBER	PIN DIA. D	PIN DIA. E	TAB A	TAB L	TAB L1
16	16	1 1/2	1 3/4	1616-0607			2	2
		1 3/4	1 3/4	1616-0707	2	1 3/4	2	5
		1 3/4	2	1616-0708			3	2 1/2
		2	2	1616-0808			4	3 1/4
		1 1/2	1 3/4	1218-0607			3	2 1/2
		1 3/4	1 3/4	1218-0707	2	1 3/4	2	4
		1 3/4	2	1218-0708			5	3 3/4
		2	2	1218-0808			6	4
		1 1/2	1 3/4	1418-0607			4	3 1/2
		1 3/4	1 3/4	1418-0707	2	1 3/4	2	5
		1 3/4	2	1418-0708			6	4
		2	2	1418-0808			7	4 1/4
		1 1/2	1 3/4	1618-0607			4	3 1/2
		1 3/4	1 3/4	1618-0707	2	1 3/4	2	5
		1 3/4	2	1618-0708			6	4
		2	2	1618-0808			7	4 1/4
		1 1/2	1 3/4	1818-0607			4	3 1/2
		1 3/4	1 3/4	1818-0707	2	1 3/4	2	5
		1 3/4	2	1818-0708			6	4
		2	2	1818-0808			7	4 1/4
		1 1/2	1 3/4	1420-0607			4	3 1/2
		1 3/4	1 3/4	1420-0707	2	1 3/4	2	5
		1 3/4	2	1420-0708			6	4
		2	2	1420-0808			7	4 1/4
		1 1/2	1 3/4	1620-0607			4	3 1/2
		1 3/4	1 3/4	1620-0707	2	1 3/4	2	5
		1 3/4	2	1620-0708			6	4
		2	2	1620-0808			7	4 1/4
		1 1/2	1 3/4	2020-0607			4	3 1/2
		1 3/4	1 3/4	2020-0707	2	1 3/4	2	5
		1 3/4	2	2020-0708			6	4
		2	2	2020-0808			7	4 1/4



QUALITY TOOL & ENGINEERING  
P. O. BOX 338  
350 BRYANT LANE  
WOODBURY, TN 37190



CALL AND ASK ABOUT OUR SPECIAL  
ECONOMY LITE DUTY I X I X I DIE SETS  
AND SAVE MONEY

QUALITY TOOL & ENGINEERING HAS BEEN MANUFACTURING PRECISION DIE SETS FOR OUR CUSTOMERS SINCE 1971. WE HAVE BEEN CONCENTRATING ON JUST A FEW SELECT CUSTOMERS. WE ARE NOW HOPING TO EXPAND OUR CUSTOMER BASE TO INCLUDE YOUR COMPANY. PLEASE CALL US FOR A QUOTE ON YOUR NEXT DIE SETS.

QUALITY TOOL & ENGINEERING IS ALSO A MODERN MACHINE SHOP WITH BLANCHARD GRINDING CAPABILITIES OF 84" ACROSS CORNERS. WE HAVE SEVEN CNC MACHINING CENTERS WITH CAPABILITIES OF 30" X 60". WE HAVE FOUR WIRE EDM MACHINES WITH CAPACITIES OF 23" X 31" X 9" THICK. WE ALSO HAVE JIG GRINDING AND JIG BORING CAPABILITIES. PLEASE LET US KNOW HOW WE CAN HELP YOU. PHONE 1-888-535-5434 TOLL FREE